

Product Catalogue

UROMIC Samba

Get into the flow with MMT Urodynamics

www.mmtsistemas.com



MEDKONSULT MEDICAL TECHNOLOGY

FEEL THE FLOW

Urodynamics made easy with MMT



MEDKONSULT medical technology s. r. o. (MMT) is a leading European manufacturer of urodynamic equipment – instruments for urinary tract examinations.

The MMT product portfolio includes a wide range of diagnostic equipment commonly found in Urology and Urogynaecology Departments. This includes basic systems designed for uroflowmetry, mid-level systems such as 5 channel cystometry/manometry and high-end complex urodynamic examination systems with up to 16-channels of measurement. MMT also have the feature of being able to link to X-ray device and ultrasound (i.e. videourodynamics).

The MMT team comprises of a wide range of members with various skills and experience. This allows product development through to product support and after-sales to strive to be ‘best in class’ in all that we do. Our company values mean that we are always focused on the customer experience – often taking unconventional approaches and lateral thinking to provide unique solutions.

The MMT company goal is to provide first class diagnostic equipment right through our product portfolio and provide a reliable basis on which further treatment plans/pathways can be determined. MMT products are currently delivered into more than 50 countries through our dynamically growing network of our distribution partners.

All MMT products are designed and manufactured in accordance with the valid legislation including ISO, CE and other certification as required.

www.mmtsystems.com

Uromic Samba

Multifunctional urodynamic system provides “ALL IN ONE”.

- Compact 8 channel system for complex functional diagnostics.
- Robust and stable trolley.
- Optional laser printer for printing synchronized X-ray images alongside the urodynamic reports.
- 4 braked wheels for safety.
- Small footprint minimises use of space in clinic and storage.
- Industrial PC for added reliability.
- Unique wireless uroflowmeter connection at 866/915 MHz ensures stability and no signal dropout.
- Further options for videourodynamics available.



Accurate 7 roller pump.



Optional touchscreen and waterproof keyboard and mouse for easy cleaning and disinfection.

Option: inbuilt ultrasound module for complete pelvic floor examination.



Uromic software

- Easy to install
- Multiple language versions
- DICOM
- Predefined protocols / customized protocols
- Software for anorectal manometry
- Methods conform to ICS standards
- Nomograms
- Online remote service support

Basic features of urodynamic systems UROMIC	Uromic Samba
Measuring channels	8
Wireless uroflowmetry	● option
Wired uroflowmetry	● standard
Filling cystometry	● standard
VLPP	● standard
Profilometry (UPP)	● option
Pressure Flow study	● standard
EMG, Biofeedback	● option
Videourodynamics	● option
Anorectal manometry	● option
Bladder scanner	● option

Accessories for Uromic

All our urodynamic systems are compatible with a wide range of accessories.

Uroflowmetry

Flow meters utilise wired/wireless weight cell transducer technology to transform urine flow from the patient into a graphical format.

Cable length up to 6 meters



Unique wireless technology at 866/915 MHz

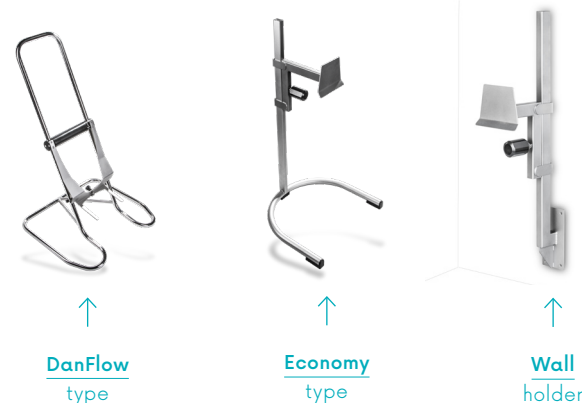
- massively improved range between flow rate and printer compared to Bluetooth (BT)
- walls and doors will not be an obstacle unlike with BT
- working distance up to 50 m
- hugely improved stability compared to BT, no signal dropout

Incredible battery performance



- up to 2 years between changes
- no regular/daily charging of flow meter base meaning no missed clinics due to flat batteries

Two types of stands for flow meters – both of them are height adjustable, easy to alter the height.



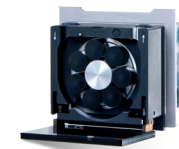
The flexibility of the stands allow them comfortably to slide underneath a commode for kids and female patients.



MMT accessories for uroflowmetry meet the high demands of sterile hospital environment and comfortable handling during the examination.

Cystometry

MMT pump and infusion sensor ensure precise volume filling.



- accurate 7 roller pump
- cysto/profilometric pump



- infusion sensor
- additional pump volume monitoring

Profilometry

Unique design and wide range of accessories allow comfortable use for measuring the urethral profile.



- unique magnetic puller
- customizable speed



- resterizable catheter holder
- 2 different sizes available



- puller with fixation arm on a stand
- easy to position



- flexible arm used with a universal Manfrotto holder



- flexible arm used with a Euro listel holder

The flexible arm is easily manoeuvred into correct position.

VLPP

Valsalva Leak
Pressure Point

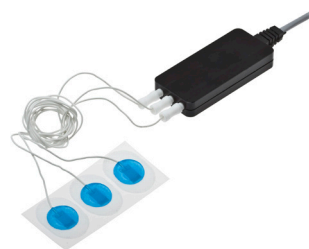
Flexible camera from MMT
allows easy visualisation
of urethral leaks.



- flexible camera with the holder and the inbuilt light
- compatible with universal Manfrotto holder or Euro listel holder

EMG Biofeedback

EMG curve is smooth and precise thanks
to external pre-amplifier.



- EMG pre-amplifier with electrodes
- compatible with any electrodes



- Biofeedback image animation used in pediatric examination helps to communicate.

3D Bladder Scanner

- integrated application in Uromic software
- variety of holders for urodynamics range of systems
- optional portable version with tablet and cart

The MMT Bladder Scanner is intuitive
and accurate Real-Time portable
bladder scanner.



TryTable

Multipurpose examination couch – solution
for urology and gynaecology, USG scanning,
X-ray images



↑
"Puzzle" – easy to
release / fix

- Wide range of settings
- Wide range of accessories
- 3 motor examination couch
- Universal eurolist to attach the accessories
- Easy to clean/disinfect
- Four locking wheels
- Levers easy to use
- Accessories right/left side



Headrest
easily adjustable



3 motor examination couch / Memory for 3 positions



Back angle



Height



Seat angle



UROMIC Samba

Samba unit:

- Cart of maximum footprint 45 x 76 cm with integrated mounting / infusion pole, easy to transport
- Keyboard height at 135 cm level
- 52 kg (60 kg in full configuration)
- 8 channels for standard complex diagnostics
- 4 braked wheels
- Industrial fanless PC with Win 10 Embedded
- Blue-Tooth communication optionally
- Monitor at 19"
- Shelf for the printer
- Compatible with all types of catheters (water, air, micro-tip)
- Integrated videourodynamic module - option
- Videourodynamic - HDMI/DVI/Analog
- Static images corresponding to a marked point on the curve
- Real-Time ultrasound probe (Bladder Scanner) for PVR (post voided residual) fully integrated with Uromic SW
- Integrated holder for the Bladder Scanner

Software:

- Complete software installation including tests configuration
- Flexible and user friendly software
- Open protocols - no extra costs on SW licences
- Wide range of nomograms included (at no additional costs)
- Flexible configuration of the test templates and hardware
- Integrated MMT PDF export
- Dicom - option
- Tests customizable
- Export to Word, customisable test protocols (via Word)
- Patient database - easy to backup
- Remote control service support application
- Storage of patient data, results and the configuration settings on network server
- Software for Anorectal Manometry - option
- Integrated back-up utility

Security (option):

- Guaranteed individual access for authorized person
- Encrypted local and/or network storage and/or transmission of recorded data
- Traceability of performed actions (reading, adding, modification, deleting)

Uroflowmetry:

- Height adjustable stand - with one hand adjustable; 37 - 85 cm
- Weight sensor - urine is not dispersed during the voiding
- Easy and low cost maintenance
- Disposable & reusable containers and funnels available
- Commode for women and kids - option; load capacity up to 200 kg
- Wireless flow meter optionally; using license-free ISM band 866 MHz up to 50 m
- Automatic x Manual uroflowmetry
- Automatic zero capability

Cystometry:

- Inbuilt cystometric / profilometric pump
- 7 accurate rollers, the best ratio of pressure and drive rollers
- MMT pump + pump tube developed especially for MMT = precise filling volume
- Opening the cover of the pump stops the filling - protection
- Infusion weight cell optionally
- Weighing cell capacity = 3000 g
- Pressure Flow study

EMG (option):

- Biofeedback included automatically without additional cost
- Biofeedback with motivation illustrative picture
- EMG possible with different types of the electrodes
- Smooth curve thanks to the external pre-amplifier
- External pre-amplifier allows choice of any channel
- Easy EMG balancing - balance in one test holds for all other EMG tests on the same patient

UPP (option):

- UPP possible from different angles easily - catheter position easily altered
- Two sizes of the catheter holder for different catheter's sizes
- Silent and smooth operation using 2 magnetic rollers
- Disinfection/sterilization of the catheter holder, generally easy cleaning
- Flexible arm
- „Home position" of the catheter for multiply UPP
- Rest/Stress profile detected/calculated automatically

Valsalva Leak Point Pressure (VLPP):

- VLPP test included automatically
- Flexible camera to observe urethral opening for leaks (option)
- Real picture visible within the test allows to mark the right leakage point

Others:

- Comply with CE, ISO
- Equipotential terminal
- 110 - 230 VAC, 50 / 60 Hz
- Class IIa medical equipment
- Isolation 5,000 V between the unit and the patient
- Medical grade thermal protected separating transformer

Get into the flow with **MMT** **Urodynamics**



MEDKONSULT medical technology s.r.o.
Pasteurova 15, 779 00 Olomouc, Czech Republic

T +420 581 113 030
E info@mmtsystems.com

www.mmtsystems.com